

ExtremeWireless™ WiNG Express Manager VX 9000E

High-Performance Enterprise-Class WLANs, Simplified for Smaller Businesses

**EXTREMEWIRELESS WING EXPRESS
MANAGER IS IDEAL FOR:**

RETAIL

- Small to midsize retail stores

WAREHOUSING

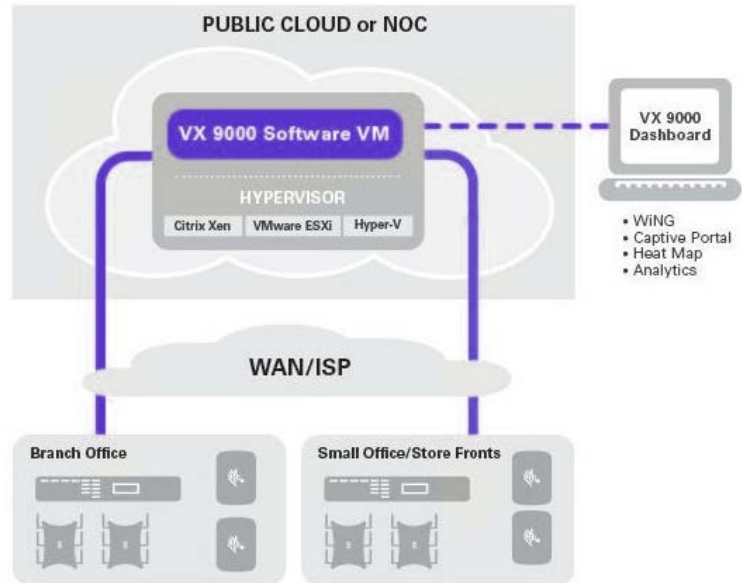
- Small to midsize warehouses

MANUFACTURING

- Production lines in small to midsize manufacturing plants

HEALTHCARE

- Small to midsize hospitals and clinics



Product Overview

In today's mobile economy, small to midsize businesses share many of the same wireless networking needs as a large business. Employees, business partners, and customers need and expect the same high-performance enterprise-class wireless LAN (WLAN) connectivity — a WLAN that offers the wired-style speeds required to maximize network efficiency and rock-solid security, with around-the-clock dependability, automated network tuning, and self-healing. And just like large businesses, small to medium-sized businesses need the network analytics and tools to monitor, manage, and troubleshoot the WLAN and all its connected devices.

ExtremeWireless WiNG Express offers solutions based on virtualized software technology, creating cost-effective, high-performance, enterprise-grade wireless networking designed specifically for growing businesses and operations. The use of virtual controller technology for small, autonomous networks, and the VX 9000E for larger networks leveraging private cloud-based technology, offers customers a wide range of solutions without controller appliances. Now, you can give your workers and customers the reliable wireless connectivity they need to maximize productivity and deliver best-in-class service to each and every customer. The result? Real competitive advantage.

FLEXIBILITY FOR YOUR GROWING BUSINESS

WiNG Express virtual controller technology enables businesses to create networks of 1 to 64 access points at a single site, without a controller appliance or access point licenses. This reduces the number of components, simplifying deployments as well as the management and maintenance of the network.

The VX 9000E offers the agility a growing business needs. Using cloud-based technology, the VX 9000E can be deployed at the company Network Operations Center (NOC) or on a hosted server. With the VX 9000E, fast-growing businesses will be able to change and upgrade the network quickly, from expanding an existing office or warehouse space at the same location, to acquiring multiple locations across the country. The VX 9000E provides network flexibility and simple scaling, supporting various network topologies and hierarchical management, accommodating up to 1,024 access points.

GET YOUR NETWORK AND REMOTE SITES UP AND RUNNING IN MINUTES WITH EASY ZERO-TOUCH DEPLOYMENTS

With WiNG Express, you don't need to understand advanced configuration options to get your network up and running. Easy site setup and intuitive auto-provisioning policy allows easy multi-site deployments. Just power up your access points to automatically discover and provision your access points with the predefined configurations. Your enterprise-class WLAN is ready to go in minutes.

When it comes to remote site deployments, the VX 9000E supports up to 128 access points with no need for local controller appliances and they will be fully site survivable in the event of a lost WAN connection to the VX 9000E, ensuring users will still have network access. No local IT staff is needed to configure locally. Simply install the APs, and when they are powered on, they will be automatically configured with the latest firmware and location policies, and brought on-line. It's that simple!

INVESTMENT PROTECTION

As your business continues to grow, your needs may scale a remote site beyond 128 access points, but with WiNG Express's hierarchical management, the NX 5500E can be added to that remote site and managed by the WiNG Express VX 9000E. This expands your remote network capabilities to support more access points, more users, and more devices with seamless migration and management without re-architecting the network and requiring new training. This is the investment protection and return on investment that midsize businesses expect.

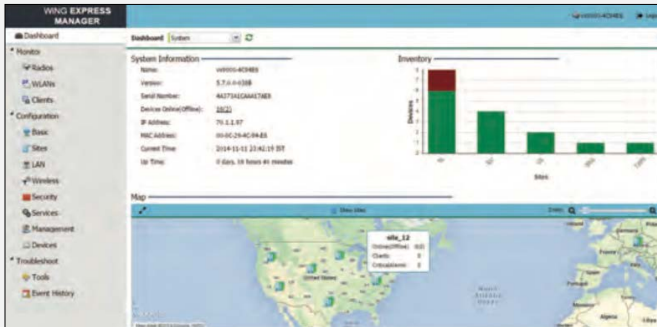
POWERFUL ANALYTICS MADE EASY

WiNG Express presents the volumes of information about your access points and their radios, all of your WLANs, and all of the mobile devices connected to your WLANs in easy-to-understand screens that make it easy to monitor and manage every aspect of your enterprise-class wireless network.

WLAN Management Made Simple

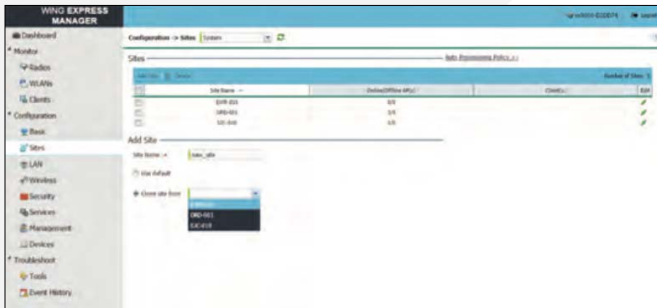
WiNG Express Manager's intuitive and easy-to-understand screens make every aspect of managing your WLAN easy – from initial staging to ongoing daily management.

SYSTEM-LEVEL (MULTI-SITE) DASHBOARD



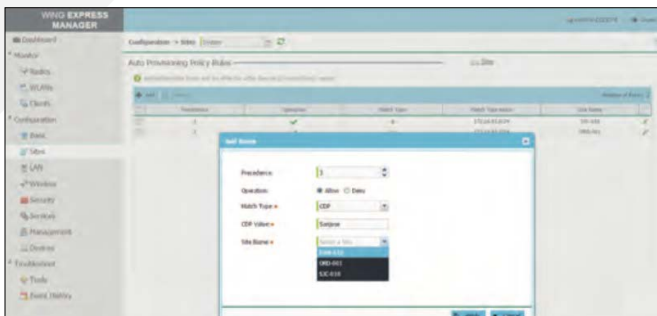
The system-level dashboard presents a map view of all the sites with inventory details for immediate visualization of the entire network. The site-level dashboard allows you to see the status of your access points and their radios, the client devices – including device type – connected to your access points, how much capacity is available, and more. And a drop-down box allows you to view information for your preferred timeframe – the last 30 minutes, the past two hours, or the last 24 hours.

QUICK AND EASY SITE SETUP



Setting up a multi-site network has never been easier. Site creation from the system level configuration can be as simple as choosing the default template configuration or cloning the desired configuration from an existing site. Specific system level configuration settings you define are pushed out globally and automatically applied to all of your access points in all of your sites or to a specific site, dramatically simplifying the time, effort and cost of network-wide configuration.

DEPLOYMENT WITHOUT STAGING – AP AUTO-PROVISIONING



WiNG Express Manager's auto-provisioning feature allows you to deploy a multi-site WLAN network without any pre-staging. Policies can be defined for each site to match against parameters such as CDP/LLDP string, AP MAC, and IP address to place APs in a specific site and apply the appropriate configuration. As a result, the time required to deploy your WLAN infrastructure is significantly reduced.

SYSTEM- AND SITE-LEVEL MONITORING/ANALYTICS



This ongoing system- and site-level log tracks and maintains a complete history of events that have occurred on your WLAN, providing valuable trending information as well as details you need to address a specific incident and prevent a recurrence in the future. You can inspect aggregated analytics at the system level or drill down to site-specific details for more granularity.

Specifications

PRODUCT FEATURES				
SUPPORTED HYPERVISORS AND CLOUD ENVIRONMENTS				
<ul style="list-style-type: none"> VMware ESX Microsoft Hyper-V 		<ul style="list-style-type: none"> Citrix Xen Amazon EC2 Cloud 		
SUGGESTED MINIMUM HARDWARE RECOMMENDATION				
Capacity (APs)	64	128	512	1,024
vCPUs	2	2	2	2
CPU Clock	2 GHz	2 GHz	2 GHz	2 GHz
Memory	3 GB	3 GB	4 GB	4 GB
Disk Space	8 GB	8 GB	8 GB	8 GB
CAPACITY AND PERFORMANCE				
Express APs Supported	1,024			
Number of Sites	1,024			
WLANs	256			
PRODUCT SKUS AND LICENSES				
VX-9000E-APPLN-LIC	Express Manager Platform w/128 Express AP licenses			
VX-9000E-ADP-32	32x Express AP license certificate for VX-9000E			
VX-9000E-ADP-128	128x Express AP license certificate for VX-9000E			
VX-9000E-ADP-512	512x Express AP license certificate for VX-9000E			

GET THE MANY ADVANTAGES OF 'BIG-BUSINESS' ENTERPRISE-CLASS HIGH-PERFORMANCE WIRELESS NETWORKING IN YOUR SMALL TO MIDSIZE OPERATION WITH EXTREMEWIRELESS WING EXPRESS MANAGER VX 9000E

For more information, visit www.extremenetworks.com/wlan or access our global contact directory at www.extremenetworks.com/contactus.



<http://www.extremenetworks.com/contact> / Phone +1-408-579-2800

©2016 Extreme Networks, Inc. All rights reserved. Extreme Networks and the Extreme Networks logo are trademarks or registered trademarks of Extreme Networks, Inc. in the United States and/or other countries. All other names are the property of their respective owners. For additional information on Extreme Networks Trademarks please see <http://www.extremenetworks.com/company/legal/trademarks>. Specifications and product availability are subject to change without notice. 11356-1216-15